

Preparing Donated Computers

To prepare computers for CCC we run through a process of wiping the hard drives, disassembling the monitors storing the leads and cables.

Once the computers are broken down, the main issue is on-site storage.

Secure Wipe with Darik's Boot and Nuke (DBAN)

To wipe the computers we use [DBAN](#). DBAN is a simple program that can be burnt onto a CD/DVD or loaded over a network, that erases data using industry standard algorithms.

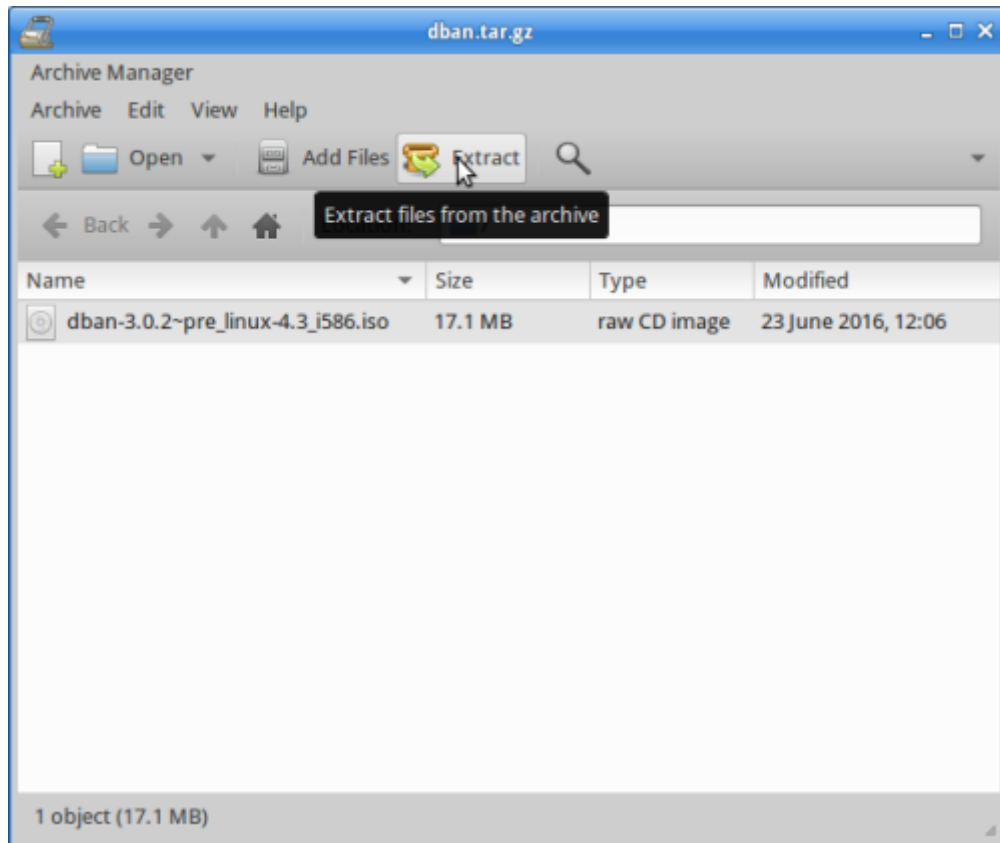
Your computer will boot and let you choose from a number of options for wiping the drive, ranging from simple to paranoid.

The official version of DBAN doesn't work on all the SLQ donated computers so we've made a build from an unofficial [fork](#), which can be burnt to a DVD.

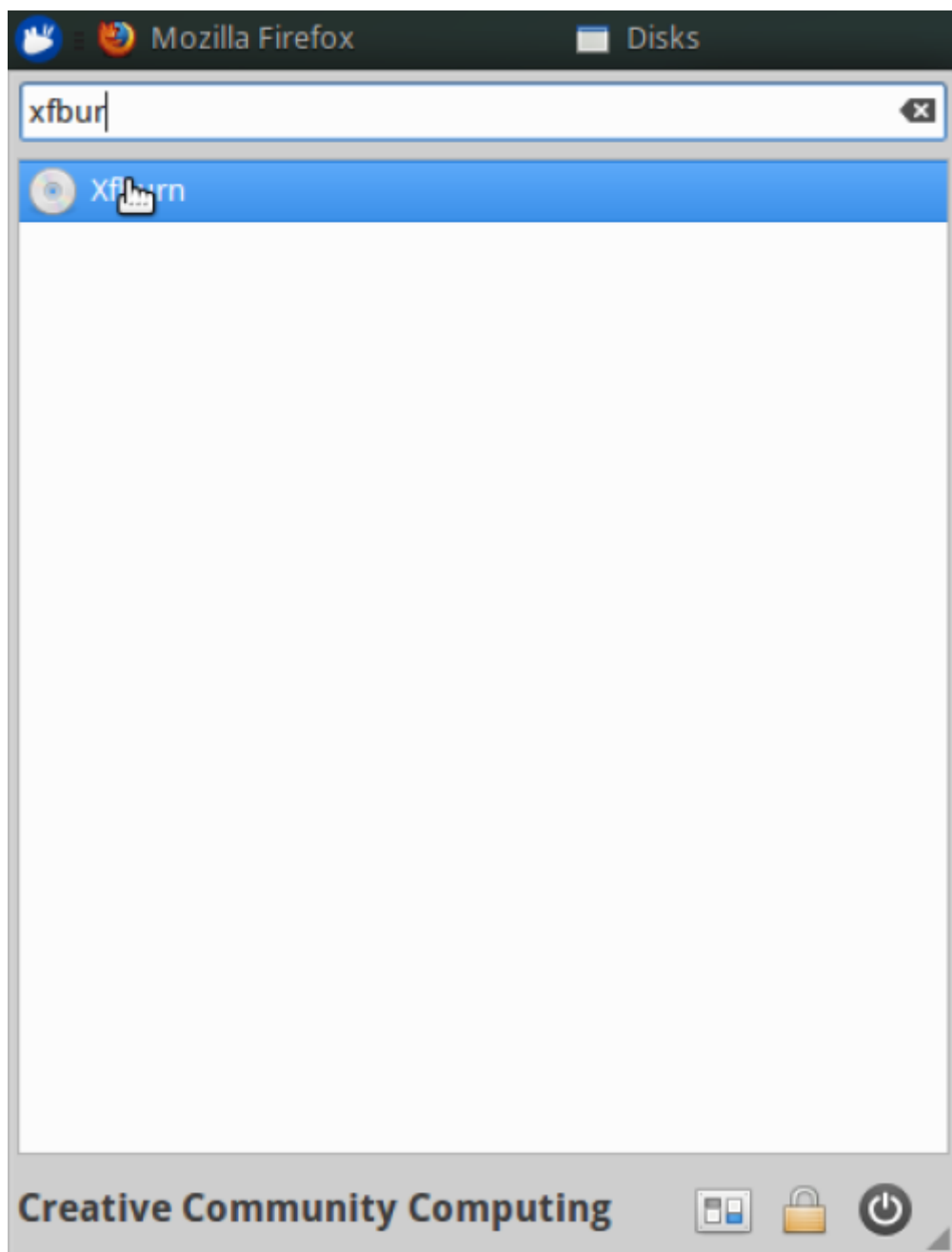
Make a DBAN CD/DVD

This procedure works on various SLQ donated computers including HP-8100 and HP-8200 Desktop PCs, HP-Elitebook laptops as well as older Dell computers. If you are having trouble adapting it for your donations, please contact us for a hand.

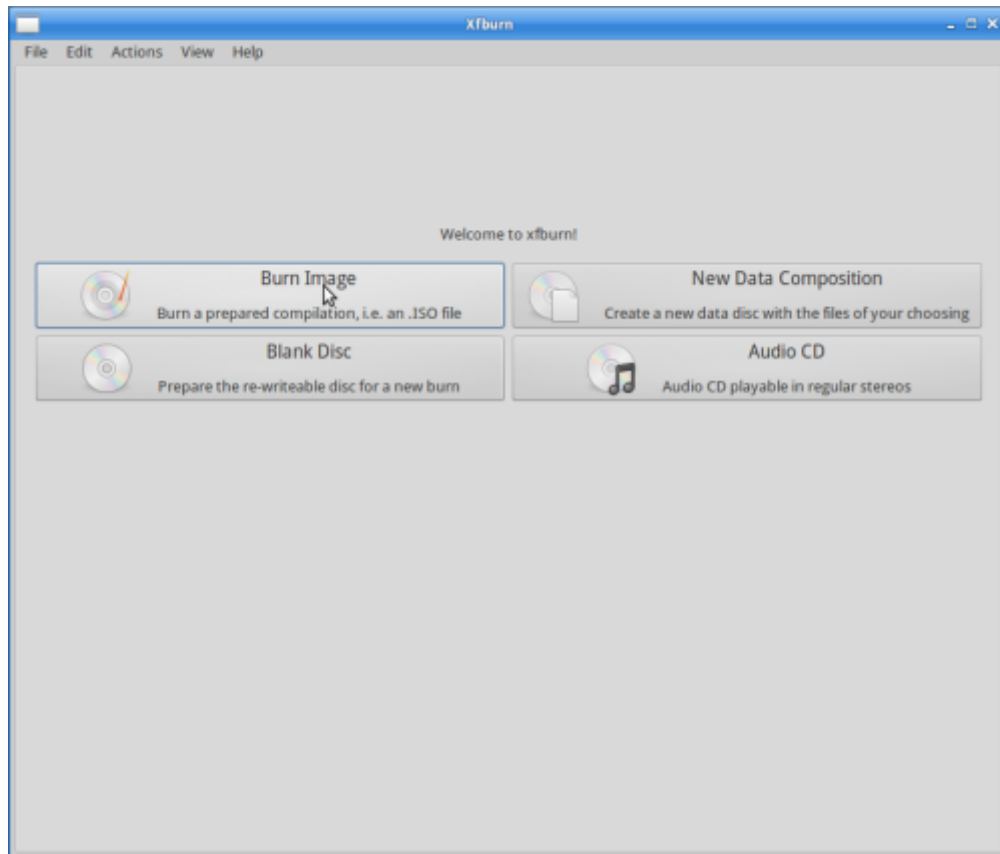
You can download our [build](#) here, then use the archive manager to extract the files.



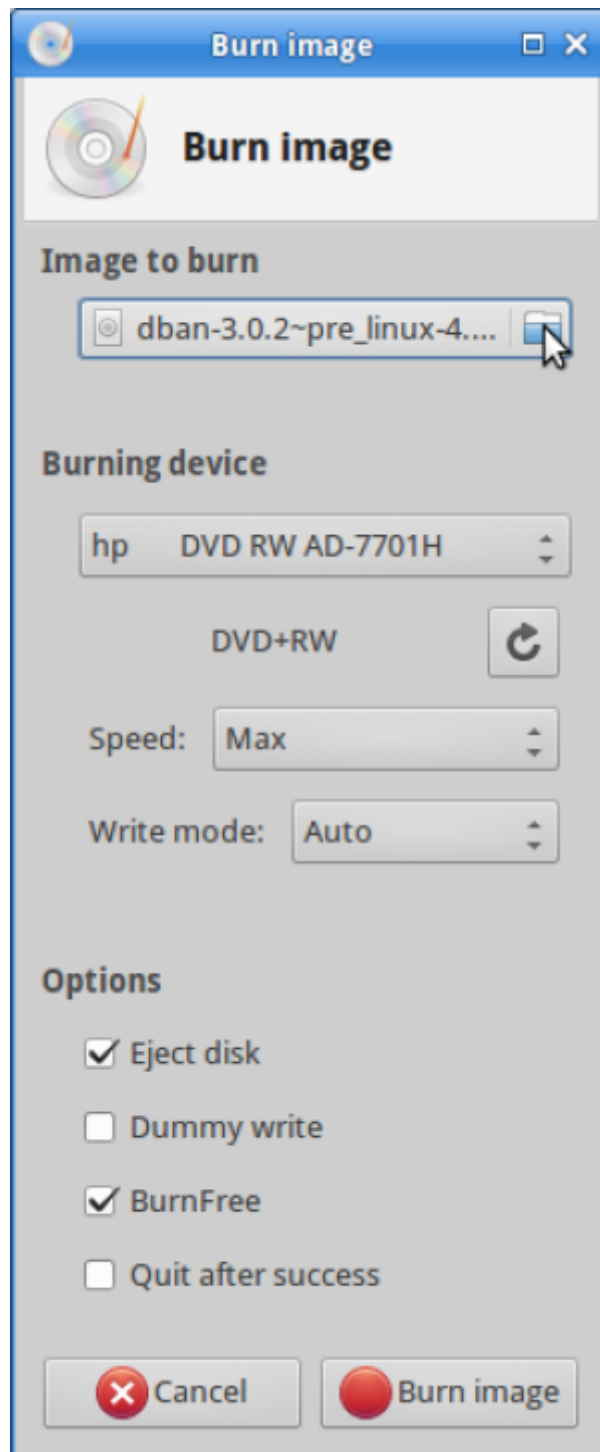
Find xfburn in the whisper menu.



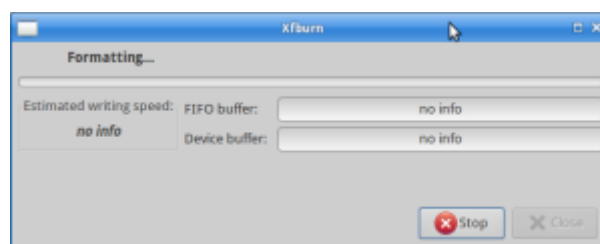
Launch it and select *Burn Image*



Find your dban.iso - then click burn.



This will take about 5 minutes.



Wiping using Dban from DVD

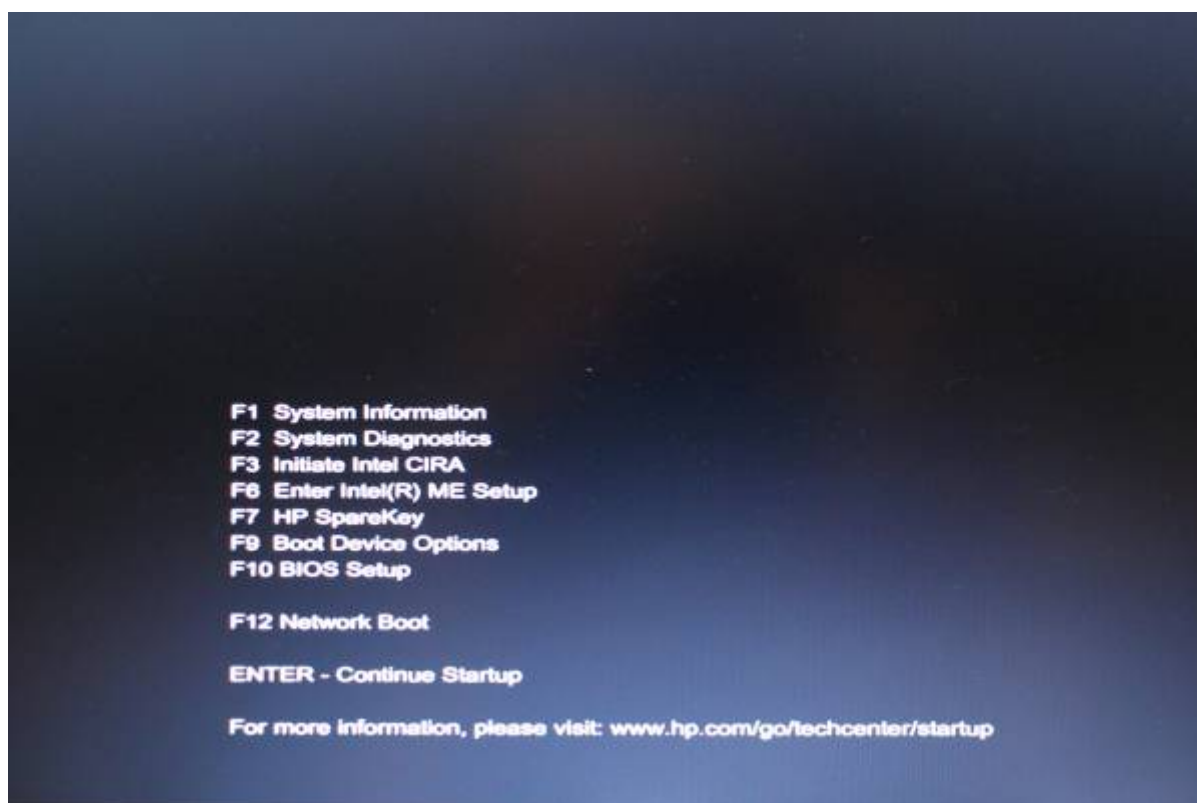
We will demonstrate this using a CCC laptop - specifically HP Elitebook 2570p. The options will vary each new computer but the basic process is;

- Boot from DVD drive
- Load DBAN
- Go to interactive Mode
- Select disks to be wiped

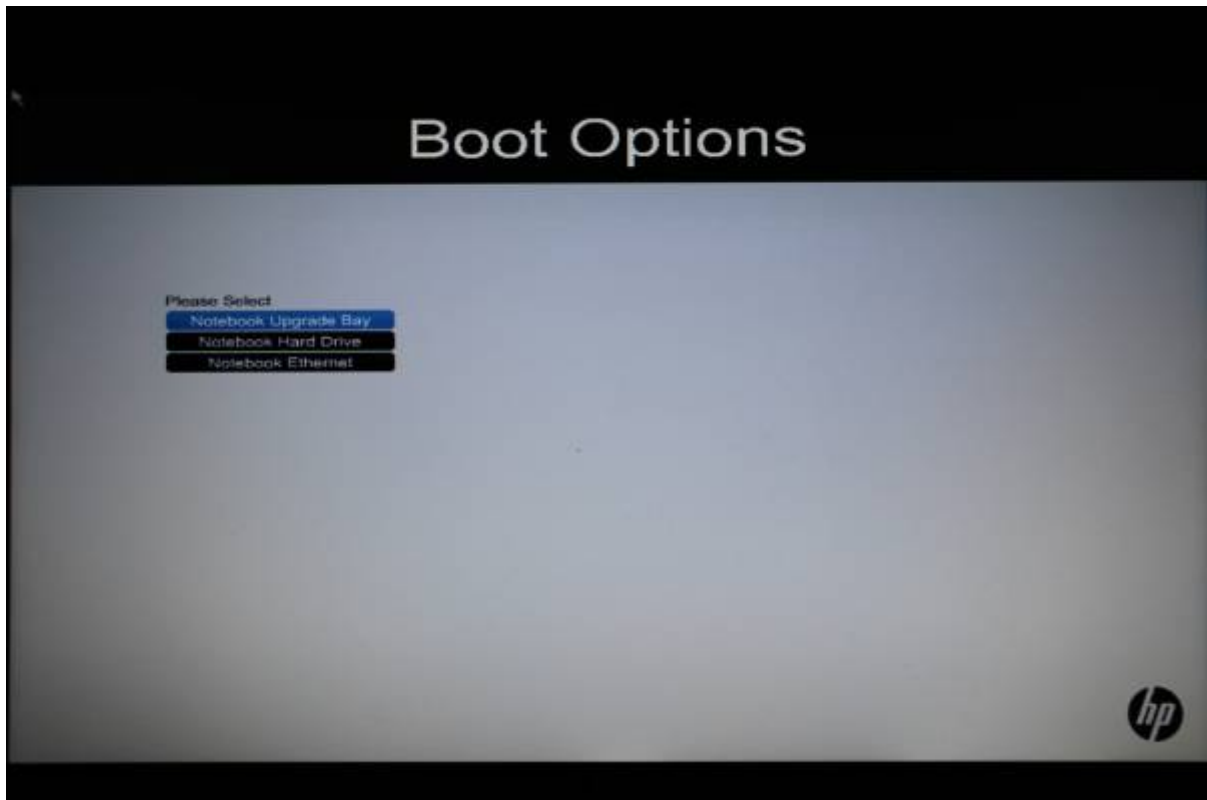


This procedure will wipe ALL information from the target drive!!!

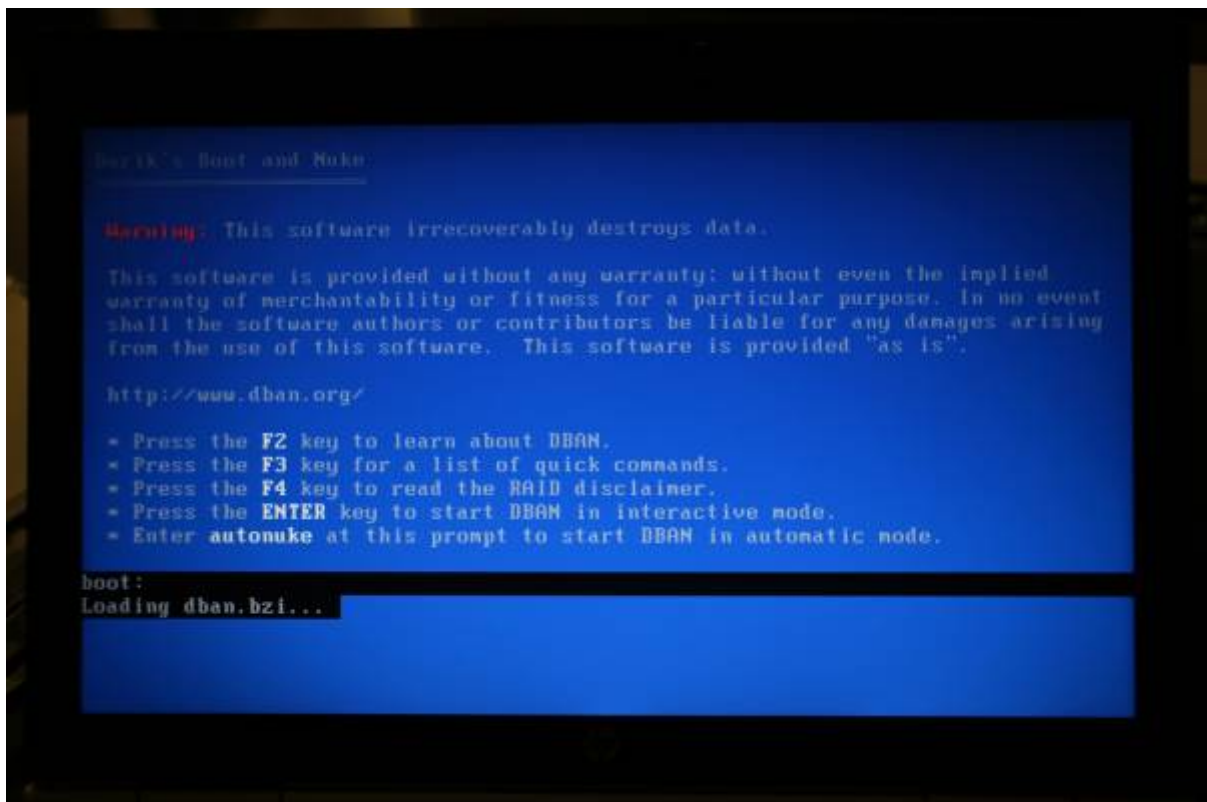
Once your computer is ready to be wiped, start it up then insert the DVD. Interrupt the boot to go to startup options (esc) then select "Boot Device Options"



The DVD drive is in the "Notebook Upgrade Bay" for this computer



Once DBAN has started, press enter to go to interactive mode



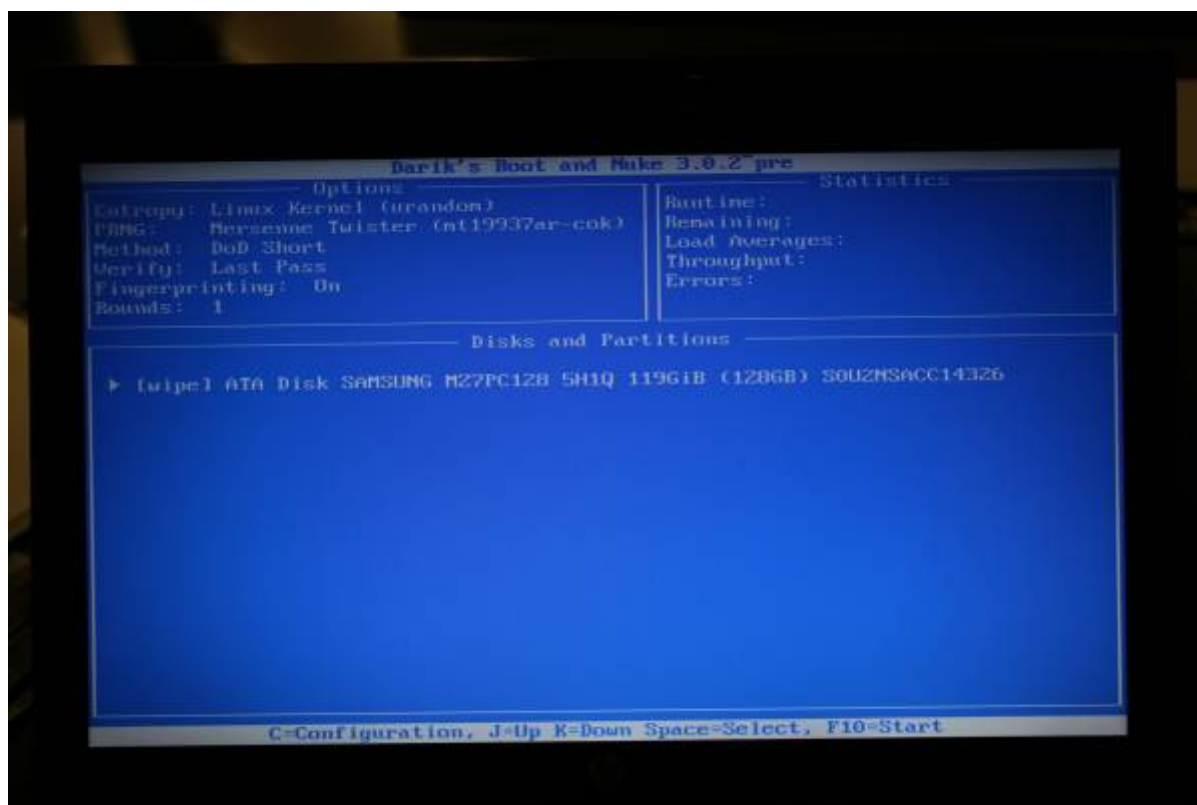
DBAN will finish loading, and scan the computers hardware ¹⁾



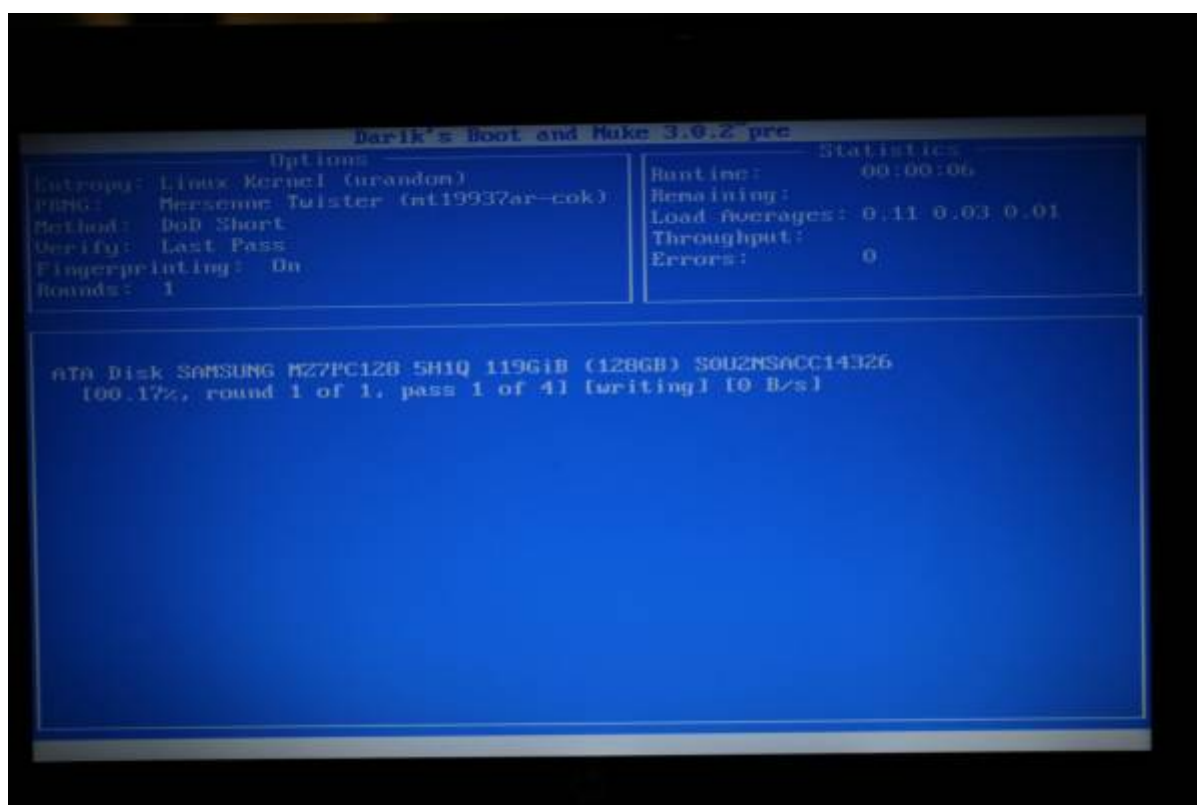
and finish with a screen that allows you to select the drives you want wiped. Make sure all the drives in the computer are visible.



Use the space bar to select.



Then press enter to start the wipe. It will take about 50 for a 120gig drive.



1)

at this point we have had trouble with removable media bays (SD-CARD readers and the like) appearing as hard disks, which DBAN fails to mount, forcing it to hang. The solution is to disable the media bays in the BIOS